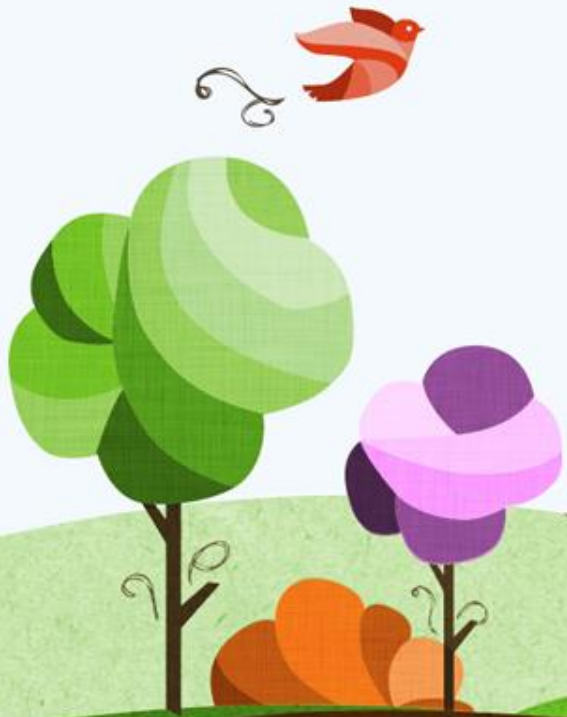
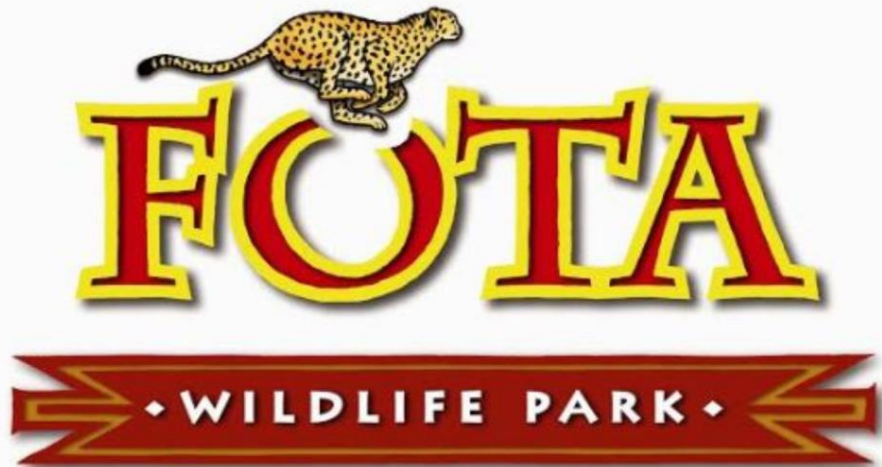


Giraffes

at Fota Wildlife Park!



Welcome to Fota Wildlife Park!



- Fota Wildlife Park was established in 1983.
- Our aim is to help conserve animals across the globe through Conservation, Education and research!
- The Wildlife Park is a charity and a not for profit organisation.
- By visiting Fota Wildlife Park, you are playing a part in helping to conserve the world's endangered wildlife!

Who am I?



Nubian Giraffe



Kordofan Giraffe



Western Giraffe



Rothschild's Giraffe



Reticulated Giraffe



Thornicroft's Giraffe



Southern Giraffe



Angolan Giraffe



Masai Giraffe

Can you guess which type of giraffe (sub-species) lives in Fota Wildlife Park?



The Rothschild Giraffe (*Giraffa camelopardalis rothschildi*)

- The Rothschild Giraffe is one of nine different sub-species (type) of giraffe that lives in Africa.
- The Rothschild species is one of the tallest giraffes. They can be an astonishing 19 feet in height and weigh about 2,500 pounds with the males weighing more than the females by several hundred pounds.



It is hard to believe looking at it, but the neck of any giraffe has the same amount of vertebrae as humans, seven.



Did you Know?

- The body of a giraffe is designed to give it speed, power, and agility. There are very few animals this size that can move so swiftly.
- They have amazing sight, allowing them to see predators from far away.
- They have a fantastic sense of smell and hearing too, so they are always alert to what is going on around them.
- Their long tail also helps to keep pests such as flies away from them.


Did you Know?



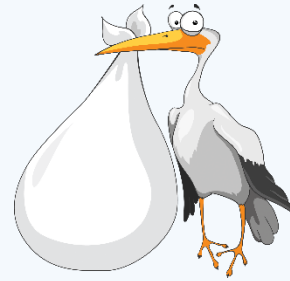
- A Giraffe has 7 neck bones (vertebrae) just like a human except they are elongated!
- A giraffe's horn like structures at the top of its head are called ossicones!
- A herd of giraffes is called a Tower!
- Giraffes only need 5 to 30 minutes of sleep in a 24-hour period! They often take quick naps that may last only a minute or two at a time.
- The giraffe is related to the okapi (*Okapia johnstoni*), found in the forests of the Democratic Republic of Congo




Giraffe Information



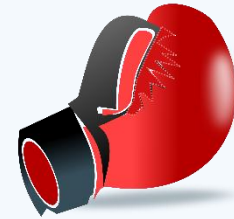
Giraffes are herbivores. They use their long, prehensile (can grip) to strip leaves and bark of trees. In Africa their favourite plant to eat is Acacia.




Females give birth to a single calf after a gestation period of between 14 and 16 months. The calf is 2 metres in height when it is born!



Males can reach 6 metres in height and can weigh up to 1180 kg. Giraffes can live for up to 25 years in the wild.



Male giraffe's fight by neck-wrestling. A male can knock out or even kill another due to the sheer momentum of their neck swings.



They sleep standing up, 2 -5 minutes at a time - looking out for predators.



All the giraffe calves born in Fota are given an Irish name.

Information on the Rothschild Giraffe!



The Rothschild Giraffe is found in both Kenya and Uganda on the African Continent!

Can you find Kenya and Uganda on the Map?

Well Done!

Things to do at Home!



Wordsearch



C	A	L	F	Z	I	P	A	K	O
A	X	C	T	E	C	Y	O	O	T
M	W	L	I	B	E	M	N	S	A
O	A	O	G	R	A	S	S	S	L
U	T	N	P	A	F	T	A	I	L
F	E	G	B	F	S	A	O	C	L
L	R	L	B	N	P	T	M	O	K
A	H	E	J	W	L	O	K	N	L
G	G	G	I	R	A	F	F	E	S
E	J	S	K	L	Y	T	O	S	P
C	O	N	S	E	R	V	E	U	T

Fota

Tail

Splay

Water

Prey

Legs

Tall

Okapi

Camouflage

Calf

Conserve

Giraffes

Ossicones

Zebra

Grass



Find 5 differences between picture A and picture B



Picture A



Picture B





How many words can you make?

Print the word below and cut out each individual letter – see what words you can find!

C	O	N	S	E	R	V	A	T	I	O	N
---	---	---	---	---	---	---	---	---	---	---	---



How many words did you find?

C	O	N	S	E	R	V	A	T	I	O	N
---	---	---	---	---	---	---	---	---	---	---	---

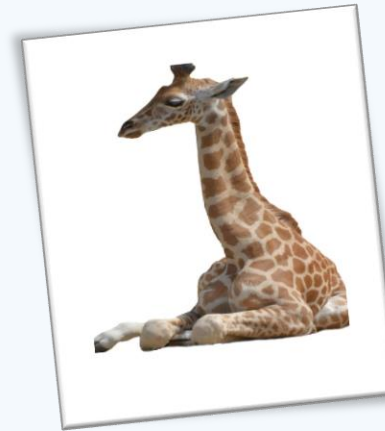


Serve
Nation
Eat
Son
Save
On
Servant
Rest
Once
At
Nest
Rat

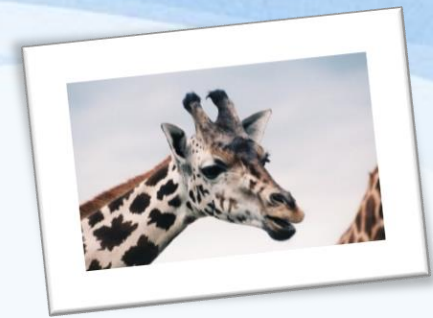
No
Cat
Sat
Ration
Vet
Rot
Rose
Ran
Cant
Nose
Sent
Soon
Vest

Civet
Cave

What other words did
you find?



Write down the first letter of each answer and discover a word that describes the giraffe's tongue. Help can be found on our website.



P

Animals that hunt and kill other animals. Predator
The subspecies of giraffe that lives in Fota Wildlife Park.
The conservation status of these giraffes.
Animals that feed on plants only.
The part of Africa where these giraffes live in the wild.
The body part that giraffes use to fight.
The number of vertebrae in its neck.
We can _____ each giraffe by using their unique pattern.
Baringo is the name of this body of water.
Willow is a plant that giraffes in Fota love to _____.

P

_____.



Giraffe



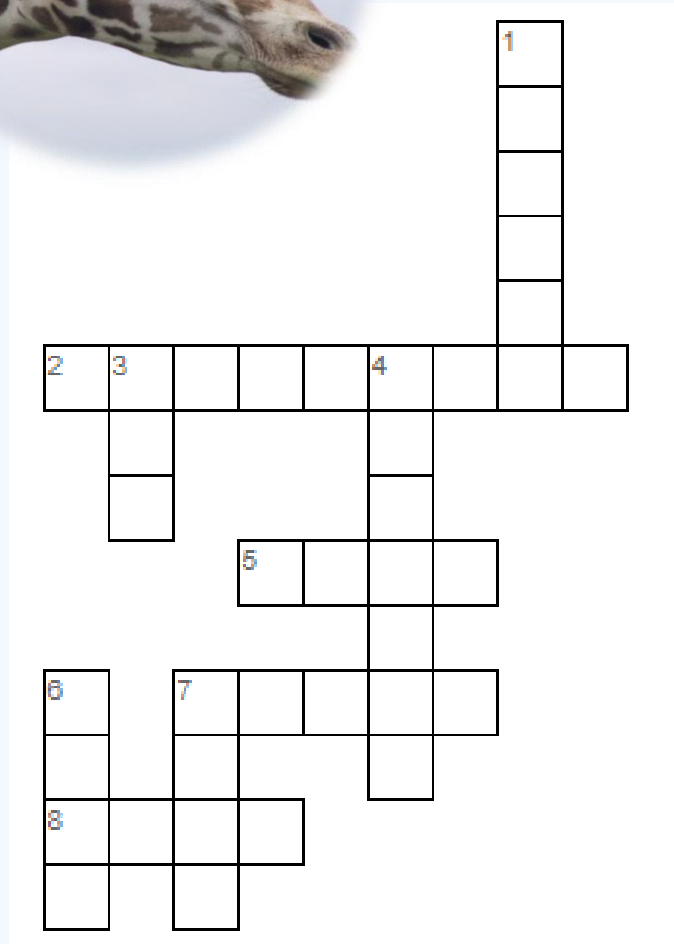
Across

2. What are the horn like structures at the top of a giraffe's head called?

5. What do you call a group of giraffes?

7. What colour is the hair on the tip of a giraffe's tail?

8. What name is given to a baby giraffe?



Down

1. A giraffe uses this to grip leaves from a tree

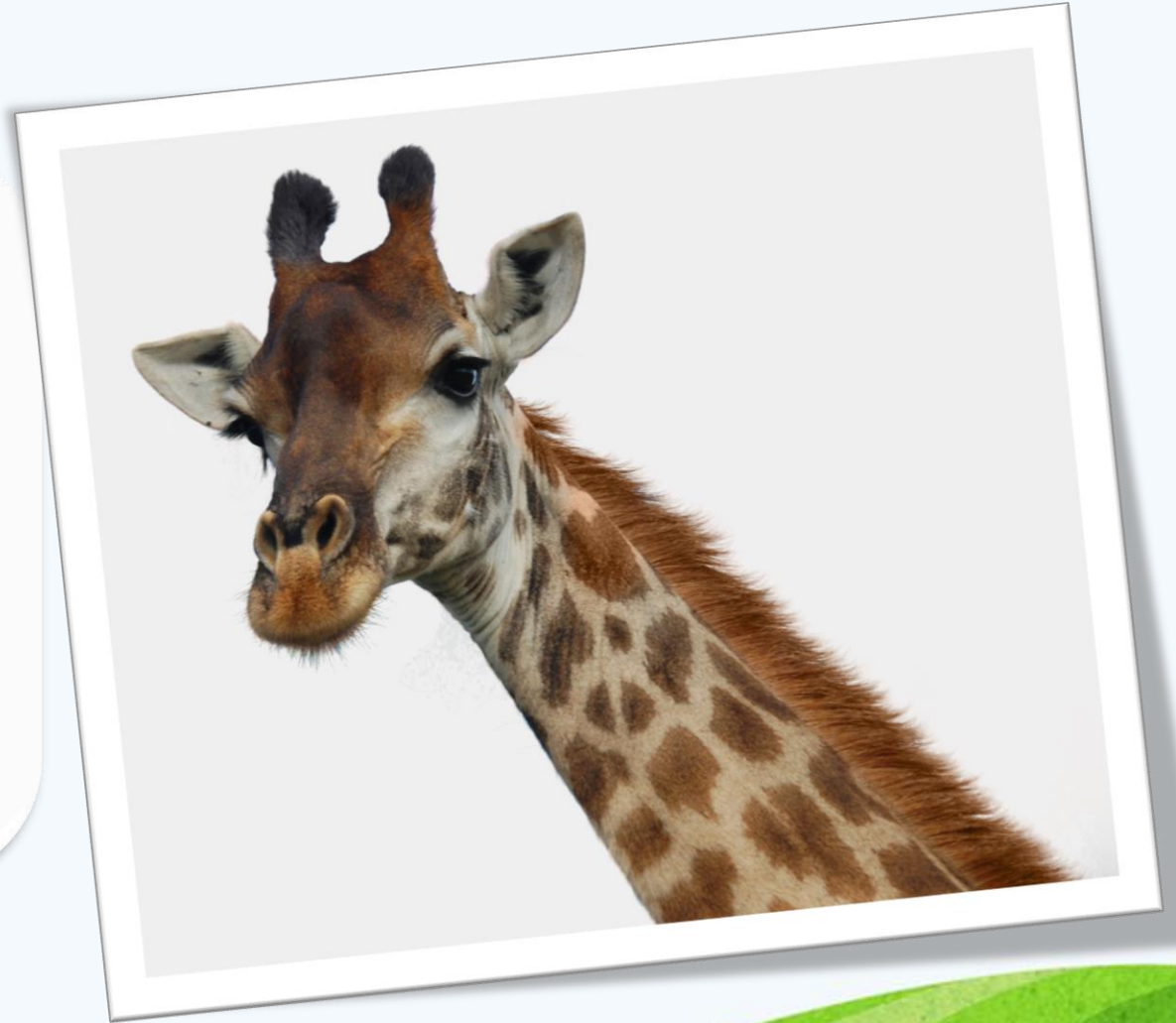
3. How tall can an adult male giraffe grow to?

4. Giraffes share their habitat with this large bird.

6. How do giraffes protect themselves from danger?

7. What is a male giraffe called?

Time to meet our Giraffe Family at Fota
Wildlife Park!



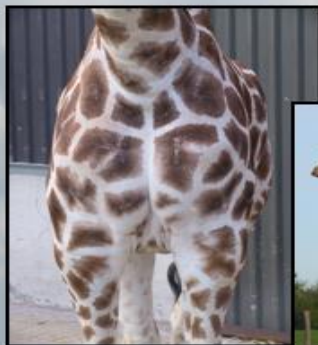
Our Giraffes



Sapphire

Born: 11/07/02

Sapphire came to Fota from Edinburgh Zoo and is the mother of some of our young giraffes. She can be identified by her pale colouration which is most notable on her upper neck and head. Her name comes from the Hebrew word for gem.



Bláithín

Born: 22/02/07

Bláithín is Irish for little flower.

Similar to Sapphire, she has a pale colouration but is more heavily patterned on her face.

Bláithín is mother to Aileen, and Casey who is now in Dublin Zoo.



Our Giraffes

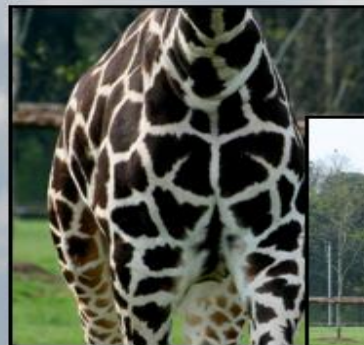


Aoife

Born: 22/03/10

Similar to her parents, Aoife has very dark colouration and an butterfly-like pattern on her chest!

She can be mischievous, sometimes not wanting to go into the giraffe house at night!

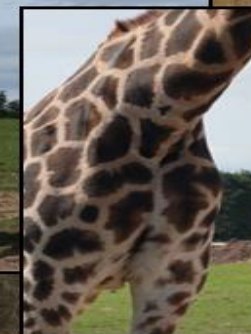


Clodagh

Born: 22/06/14

Clodagh was Aoife's first calf.

She has very dark colouration, similar to her mother, and her father, Wally.



Our Giraffes



Arria



Born: 04/11/10

Arria was born in Dublin zoo in 2010, and moved to Fota in 2014.

She is quite orange in colour, so she stands out amongst the other giraffes in the herd.



Cuileann

Born: 10/12/12

Cuileann was born in Fota in 2012. Her name means Holly in Irish, as she was born close to Christmas.

She is easy to identify, as she is missing the tip of her tail.

Our Giraffes

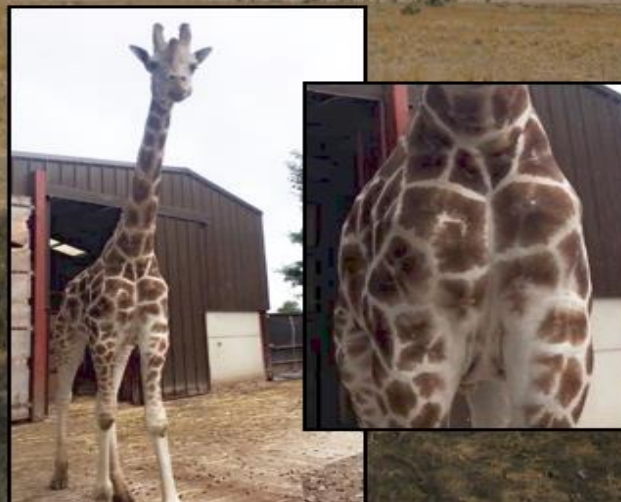


Aideen

Born: 25/01/14

Aideen was born to parents Blaithín and Wally in 2014.

Her name means 'little fire', which was chosen as it suits her somewhat fiery personality.



Fada

Born: 27/01/14

Fada was born 2 days after Aideen, to mother, Sapphire and father, Tadgh. His name means 'long' in Irish.

He can be easily identified, as he has little white spots in the centre of his patches.

Our Giraffes



Síofra

Born: 21/09/15

Síofra was the 64th giraffe born in Fota, all of whom have been given Irish names.

The name Síofra is an anagram of síoraf, which is the Irish word for giraffe.



Noínín

Born: 18/04/17

Noínín was born in April 2017 to mum, Sapphire and dad, Tadgh.

Like her mother, she is quite pale in colour, and her name means daisy in Irish..

Our Giraffes



Ferdie

Born: 15/03/09

Ferdie moved to Fota from Holland in 2013. He is a tall male giraffe, and is identified by his almost tea-stained colouration.



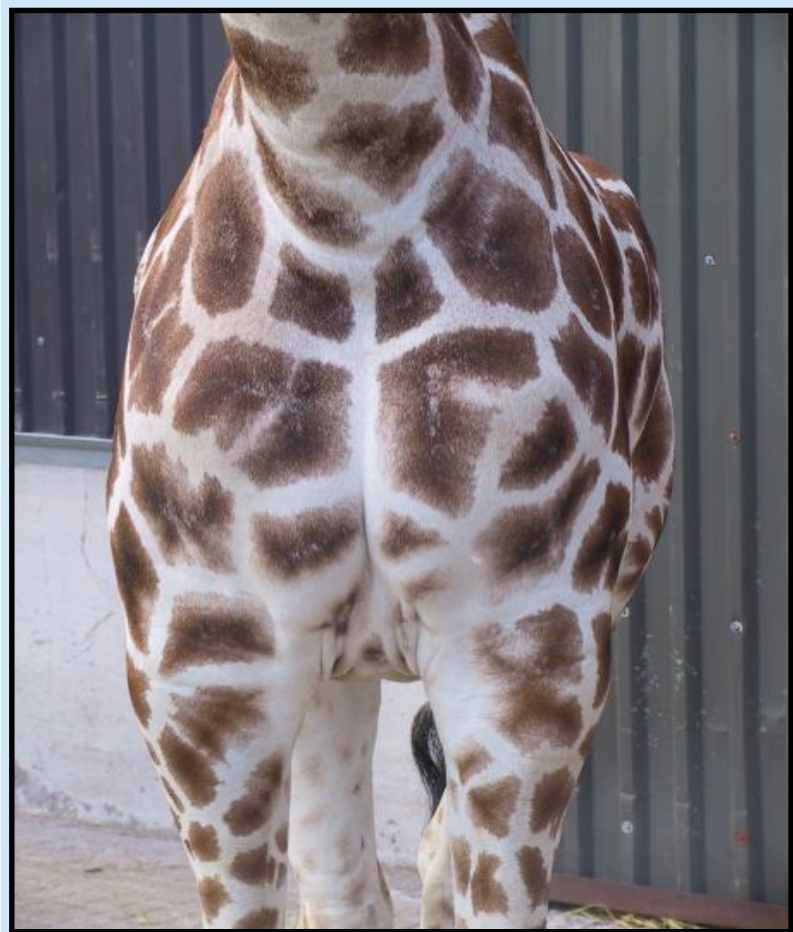
Our Juveniles



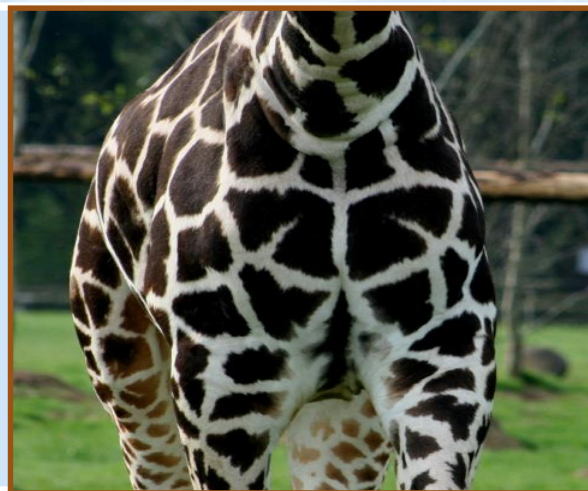
Rian

Born: 14/09/19

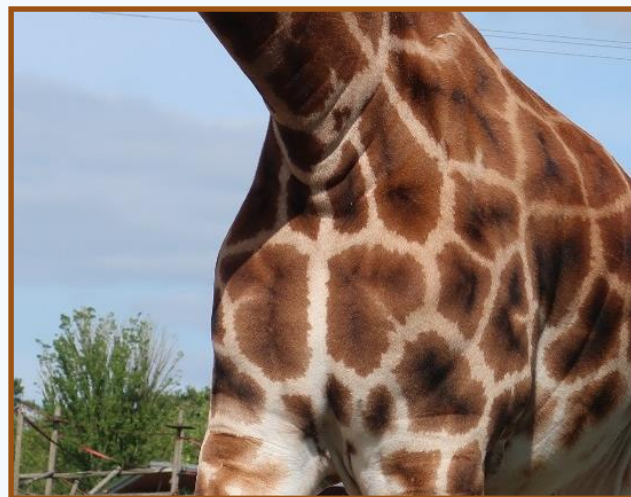
Rian was born in 2019 to mother, Sapphire and first-time father, Ferdie. Rian is Sapphire's sixth calf born in Fota Wildlife Park.



Sapphire



Aoife



Arria

Who Am I?

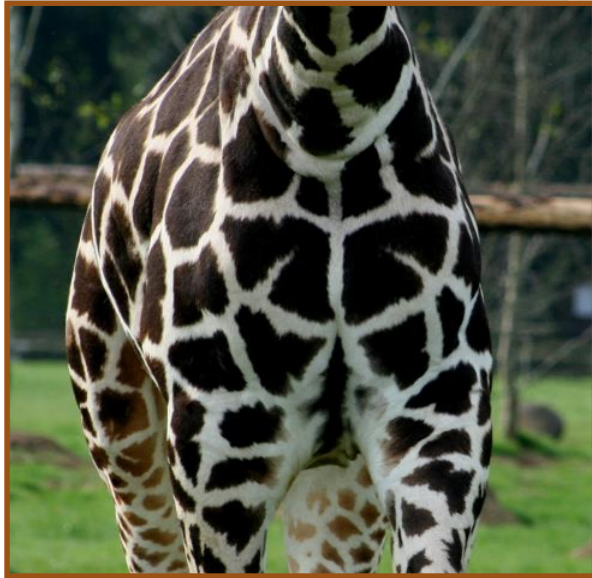
Look Carefully at
the pictures of our
female giraffes.

You can see that
every giraffe has a
different coat
pattern!

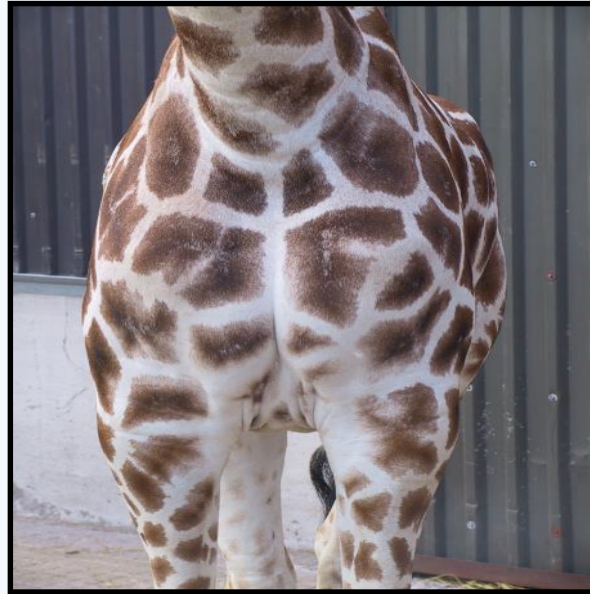
Can you identify
them on the next
page?



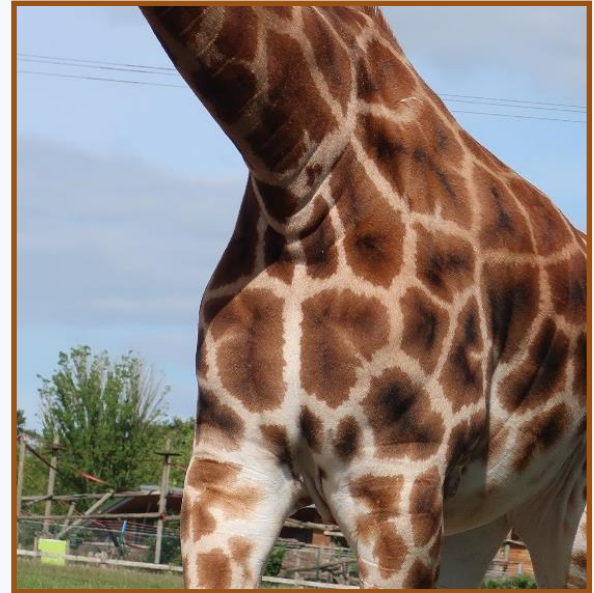
Can You Identify these Giraffes?



A



B

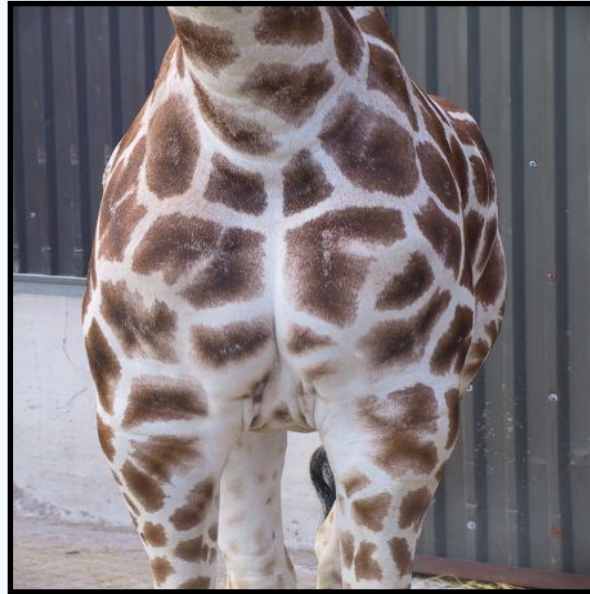


C

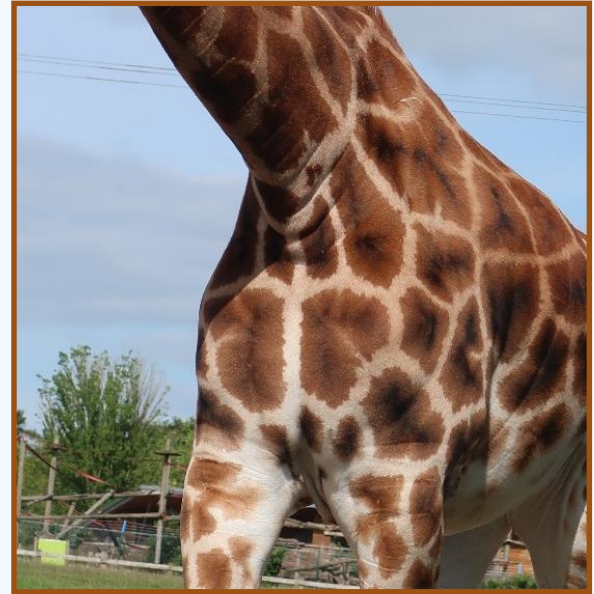
Could you Identify these Giraffes?



Aoife



Sapphire



Arria

What have you learnt? Quiz Time

Where do giraffes live?

- Africa
- Asia
- Europe

How many giraffes are in Fota Wildlife Park?

- 8
- 11
- 12

What do you call a group of giraffes?

- Herd
- Mob
- Tower

What do giraffes eat?

- Plants
- Animals
- Plants & Animals

What do you call a baby Giraffe?

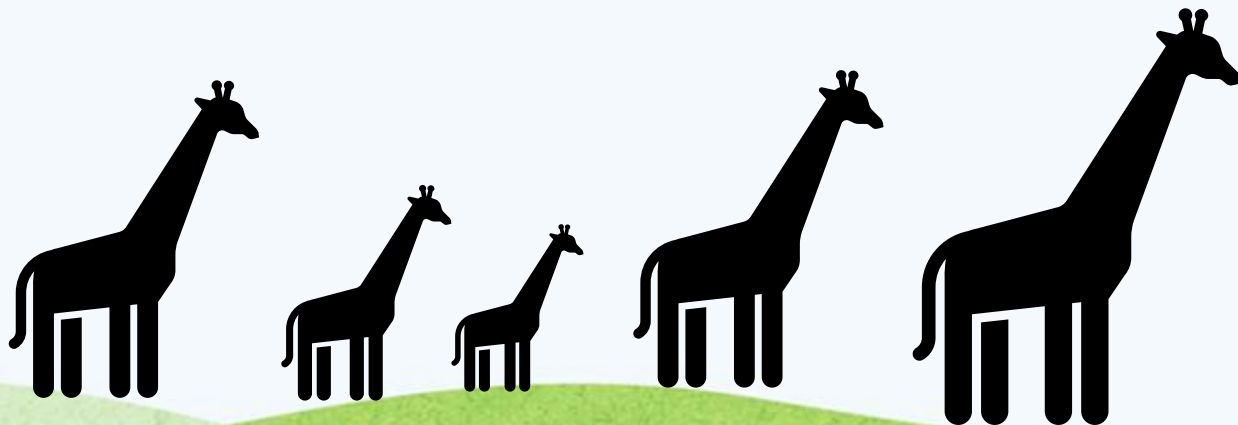
- Calf
- Foal
- Cub

How long does a giraffe live?

- 5-10 years
- 10 – 15 years
- 15 – 20 years

Name the youngest giraffe in Fota?

- Fada
- Sapphire
- Rian



Answers – How many did you get right?

Where do giraffes live?

- Africa

How many giraffes are in Fota Wildlife Park?

- 12

What do you call a group of giraffes?

- Tower

What do giraffes eat?

- Plants

What do you call a baby Giraffe?

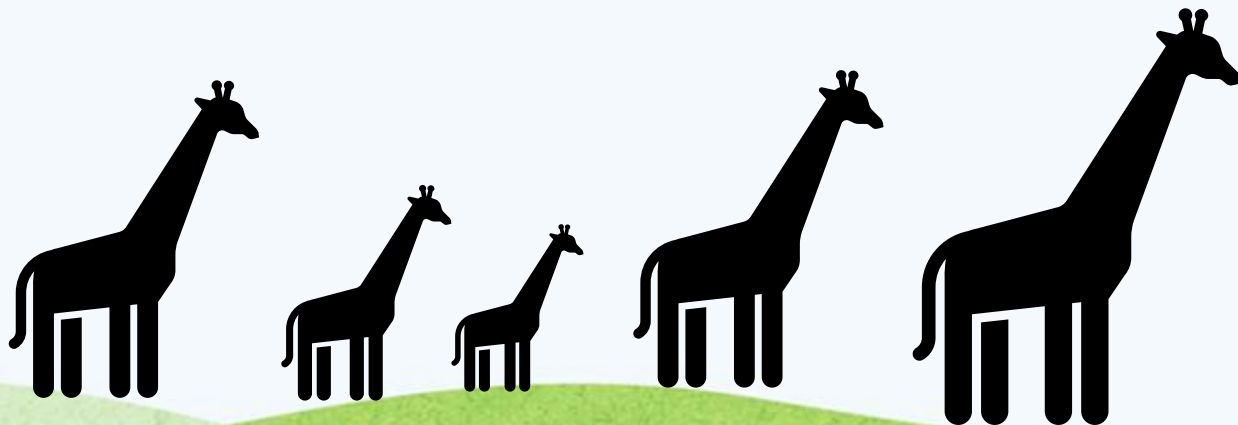
- Calf

How long does a giraffe live?

- 15 – 20 years

Name the youngest giraffe in Fota?

- Rian



Threats & Conservation



The Rothschild giraffe is classified as endangered and the current population is estimated to be less than 2,500 individuals. Numbers have increased slightly since the 1960s but still remain very low.

Sadly, all nine sub-species are threatened and across the African continent, there are less than 100,000 giraffes left! 30 years ago there were more than 150,000 giraffes roaming across the African Plains.

Giraffes face a number of threats in the wild. These include: Habitat loss through expanding agriculture, human-wildlife conflict, civil unrest, and poaching for their meat, pelts, and tails, are among the reasons for the decline.

How Can we protect them in the wild?

Fota Wildlife Park aims to educate people as to why we need to **protect giraffes**. In order to support them in the wild, we need to ensure that farmers in Africa farm their land in a sustainable way! By doing so we can help to protect giraffe habitats! Reforesting key areas with acacia trees will help to provide **giraffes'** main food source. Finally, we need to stop the poaching of **giraffes** for their tails and hides, considered status symbols.



Learning at Fota Wildlife Park.....

If you would like to learn more about wildlife.....why not book an educational tour with our education department. Each year our skilled team of educators teach in excess of 19,000 students in the areas of conservation & ecology. We welcome students of all ages all year round!
We hope to see you soon!

Contact: education@fotawildlife.ie
Or (021) 4812678 ext 206
For more details!

