

Linne's Two-toed Sloth at Fota Wildlife Park!



Welcome to Fota Wildlife Park!



- Fota Wildlife Park was established in 1983.
- Our aim is to help conserve animals across the globe through Conservation, Education and Research!
- The Wildlife Park is a charity and a not for profit organisation.
- By visiting Fota Wildlife Park, you are playing a part in helping to conserve the world's endangered wildlife!

The slow & solitary Sloth.....



Sloths are slow-moving, nocturnal creatures that spend almost their entire life suspended upside down in the trees. They eat, sleep, mate, and give birth from this position hanging high among the branches. Sloths are the only mammals whose hair grows in the opposite direction when compared to the hair of other mammals. To accommodate their upside down lifestyle, the hair parts in the middle of the belly and grows upward toward the back. The hair on the face points upward, too. This allows water to run off during bad weather!

Each strand of sloth fur has grooves that collect algae, giving sloths a greenish tint. This helps them blend into the trees they call home. The algae also provides nutrients for the sloth when nibbling on the hair during the grooming process. The only time sloths descend to the forest floor is to go to the toilet, which they do about once a week. To move to a new area of trees, sloths will often wait for the forest floor to flood and then swim to their next home.

Big forest cats like jaguars and ocelots, birds of prey such as harpy eagles, and large snakes like anacondas prey upon sloths. They defend themselves with their sharp claws and teeth. And, if needed, sloths can move quickly through the trees to escape predators.

Where in the world do you find Sloths?



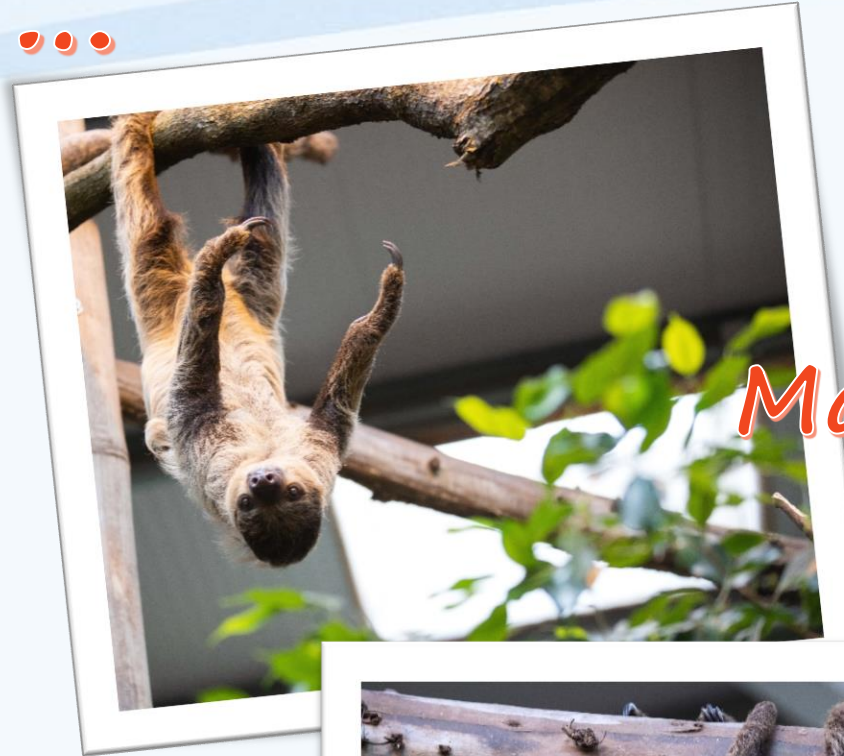
- Sloths like to live in tropical rainforest canopies in lowland and montane forests. This species is strictly arboreal (tree dwelling).
- Sloths are native to Central America and northern South America, including Columbia, Venezuela, Suriname, the Guianas, Brazil, and the upper Amazon basin of Ecuador and Peru. It ranges from sea-level up to 8,000 feet (2,438 m).



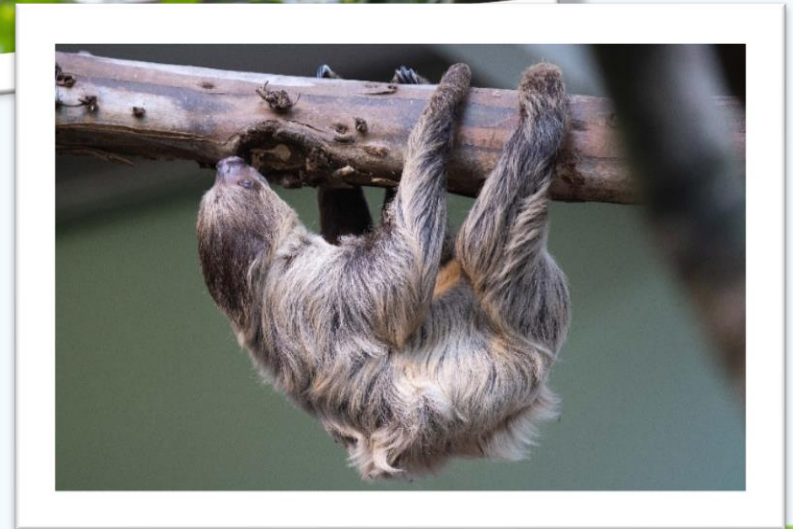
All about Sloths.....



- Sloths live in the tropical forests of Central and South America. With their long arms and shaggy fur, they are often mistaken for monkeys, but they are actually related to armadillos and anteaters.
- There are two main species of sloth and you can tell them apart based on whether they have two or three claws on their front feet. The two species look quite similar in appearance, with roundish heads, tiny eyes & ears, and stubby tails.
- Fota Wildlife Park is home to a Two-toed sloth named Matheo! Two-toed sloths are slightly bigger and tend to spend more time hanging upside-down than their three-toed relative! Three-toed sloths also like to sit upright in the fork of a tree branch.
- Three-toed sloths also have facial colouring that makes them look like they're always smiling. They also have two extra neck vertebrae which allows them to turn their heads almost all the way around!



Matheo at
Fota!



Sloth Adaptations.....



Sloths have the ability to eat leaves that are hard to digest by having a large specialised stomach. They can take over a month to digest all their food!



Two-toed sloths can vary their body temperature from 75 to 91 degrees Fahrenheit, allowing them to adapt to various weather conditions.



Organs such as the heart, liver, and spleen are placed differently in sloths than in other mammals to accommodate their upside-down lifestyle.

Two-toed sloths can tilt their heads 45 degrees backward to watch for predators.



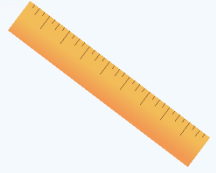
They defend themselves with their sharp claws and teeth. And, if needed, sloths can move quickly through the trees.



Each strand of sloth fur has grooves that collect algae, giving sloths a greenish tint. This helps them to camouflage themselves in the trees they call home.



Fast Facts.....



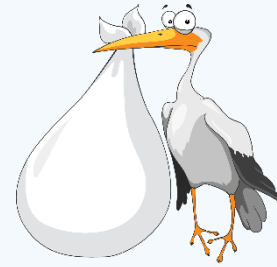
Two-toed sloths are 20-26 inches (50-65 cm) long. They vary in weight from eight to 20 pounds (4-9 kg).



Two-toed Sloths are omnivorous! In the wild they will eat leaves, young shoots, blossoms, fruit and a variety of insects and lizards!



Jaguars, ocelots and other cat species are the main predators of the two-toed sloth.



After a gestation of five to six months, the female gives birth to a single offspring in the trees. The newborn sloth is 10 inches (25 cm) long and weighs 10-13 ounces (280-364 gm). The baby climbs onto its mom's belly and clings while nursing for four to five weeks.



Sloths are solitary (live alone) except for mating pairs and females with young. Groups of females sometimes will occupy the same tree.

Sid the Sloth – A movie Favourite!



- Sid the Sloth – a movie favourite! Sid first appeared in the animated children's movie Ice Age, produced by Blue Sky Studios in 2002. He is one of the three main characters and appears alongside a woolly mammoth named Manny and a Saber-toothed tiger called Diego.
- Sid the Sloth's character is based on modern three-toed sloths and the extinct ground sloths (Megalonyxs).



Super sloth wordsearch



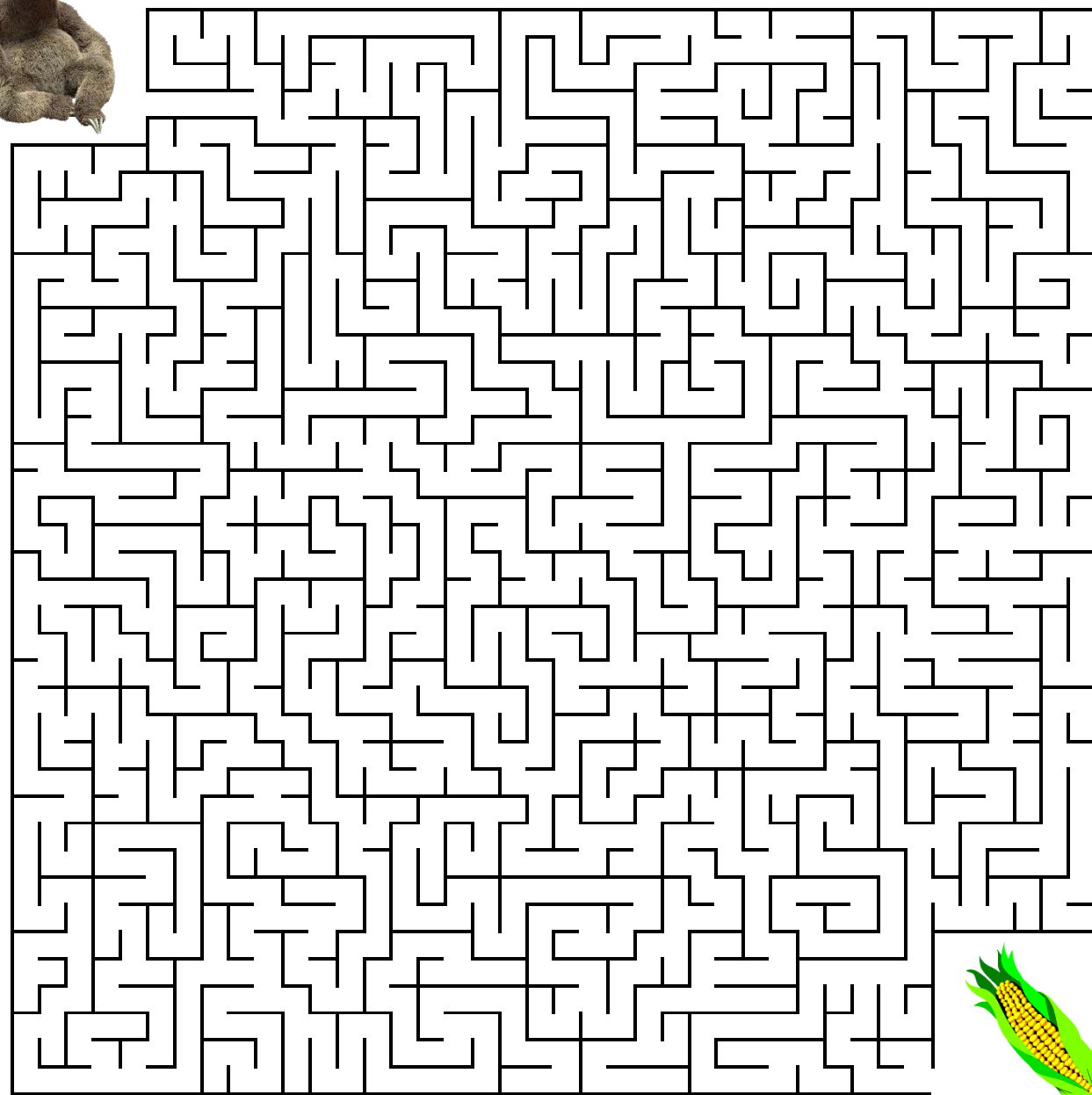
A	L	W	S	C	A	M	O	U	F	L	A	G	E
E	A	V	E	A	A	O	T	I	R	I	E	G	H
A	E	E	Y	A	L	G	M	G	N	A	H	S	H
L	R	T	E	F	S	A	I	N	A	T	E	L	E
S	O	L	I	T	A	R	Y	U	T	R	R	E	R
A	B	H	T	R	E	E	S	E	E	L	A	E	B
T	R	L	R	S	E	S	E	S	E	S	I	P	I
E	A	I	J	E	W	T	M	A	S	H	N	I	V
H	A	A	A	A	H	P	R	O	B	T	F	V	O
E	T	I	L	G	G	I	T	E	M	O	O	A	R
T	R	C	L	L	F	U	R	S	I	L	R	H	E
R	L	A	L	A	O	M	A	Y	L	S	E	E	S
R	E	L	B	I	T	E	H	R	C	A	S	S	G
P	E	S	E	V	A	E	L	S	A	F	T	F	E

TREES
 JAGUAR
 RAINFOREST
 SLOTH
 CLIMB
 EYES
 TAIL
 CLAWS
 LEAVES
 ARBOREAL
 ALGAE
 HERBIVORE
 CAMOUFLAGE
 TEETH
 FOTA
 HANG
 SOLITARY
 SLEEP



Why don't sloths
move more
often?

It's due to their
low energy diet.
They try to save
what little
energy they have
by moving very
slowly. They also
save energy by
sleeping up to 15
hours a day!



Can you
help
Matheo
find his
food?



All about Sloths - True or False Quiz!

Questions

- Sloths are arboreal?
- Sloths are native to Africa?
- All sloths have three toes on their front (fore) legs?
- Sloths are easy to spot in the rainforest?
- Lions are their main predators?
- Female sloths are pregnant for 12 months?
- Sloths are monkeys?
- Sloths are poor swimmers?

Tick the correct answer

True___ or False ___

True___ or False ___

True___ or False ___

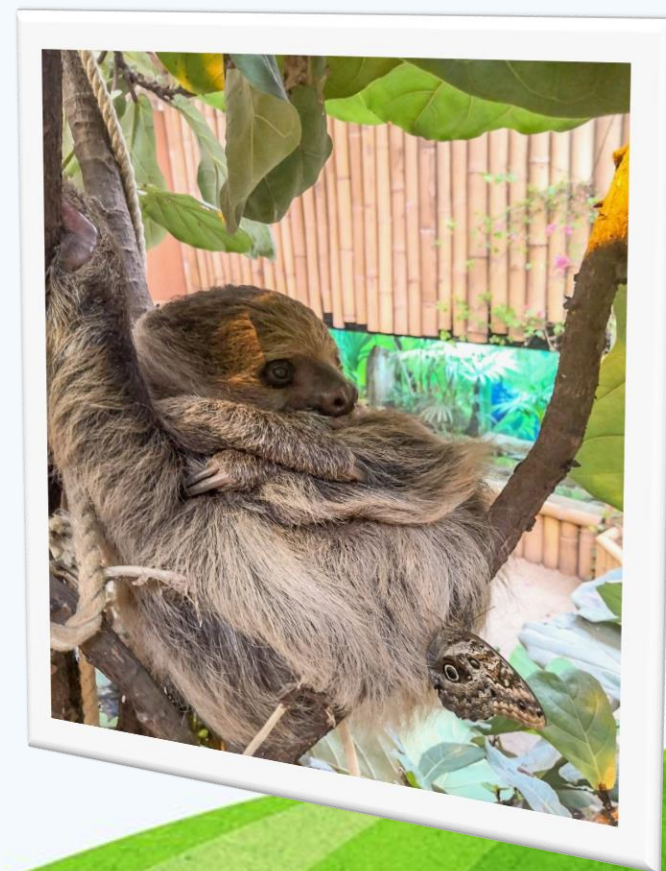
True___ or False ___

True___ or False ___

True___ or False ___

True___ or False ___

True___ or False ___





All about Sloths - True or False Quiz!

Answers

Questions

- Sloths are arboreal?
- Sloths are native to Africa?
- All sloths have three toes on their front (fore) legs?
- Sloths are easy to spot in the rainforest?
- Lions are their main predators?
- Female sloths are pregnant for 12 months?
- Sloths are monkeys?
- Sloths are poor swimmers?

Tick the correct answer

True

False

False

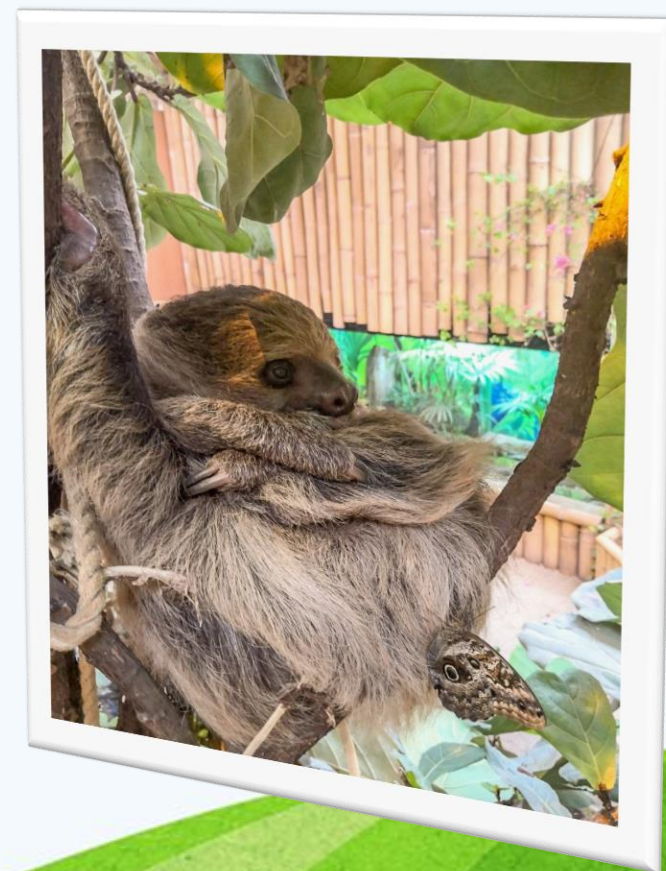
False

False

False

False

False



Meet Fota Wildlife Park's Two-toed sloth!



Fota Wildlife Park is home to "Matheo", a three-year-old juvenile male Linné's Two-toed sloth. Matheo was transferred to Fota in June 2019 from Wilhelma Zoo in Stuttgart, where he was born!



Matheo can be spotted in our Tropical House on your next visit to the park!



Sloth Conservation & Threats...



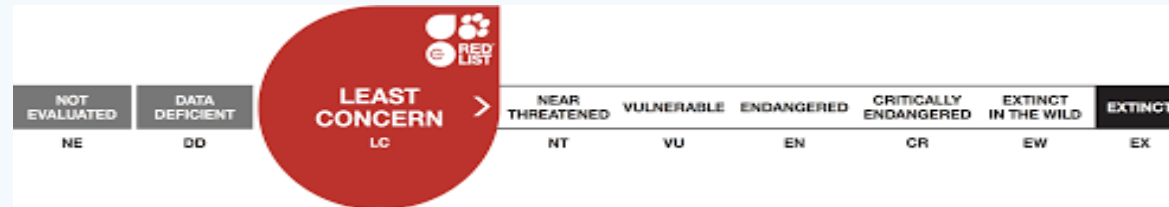
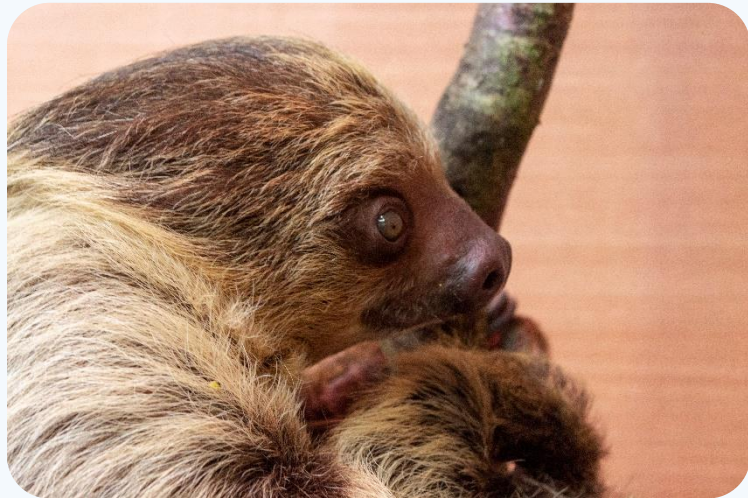
CONSERVATION STATUS

IUCN Status: Least Concern

Two-toed sloths are not listed as endangered but their numbers are declining in the wild, mainly due to loss of their rainforest habitat.

Unfortunately, they are also heavily hunted in Brazil for their meat. Their pelt is used to make saddle covers and their curved claws are used to make jewellery.

Fortunately, Two-toed sloths are present in many protected areas which has helped prevent its loss!



A least-concern species is a species that has been categorized by the International Union for Conservation of Nature (IUCN) as evaluated as not being a focus of species conservation. They do not qualify as threatened, near threatened, or (before 2001) conservation dependent.

Learning at Fota Wildlife Park.....



If you would like to learn more about wildlife.....why not book an educational tour with our education department. Each year our skilled team of educators teach in excess of 19,000 students in the areas of conservation & ecology. We welcome students of all ages all year round!

We hope to see you soon!

Contact: education@fotawildlife.ie

Or (021) 4812678 ext 206 For more details!

